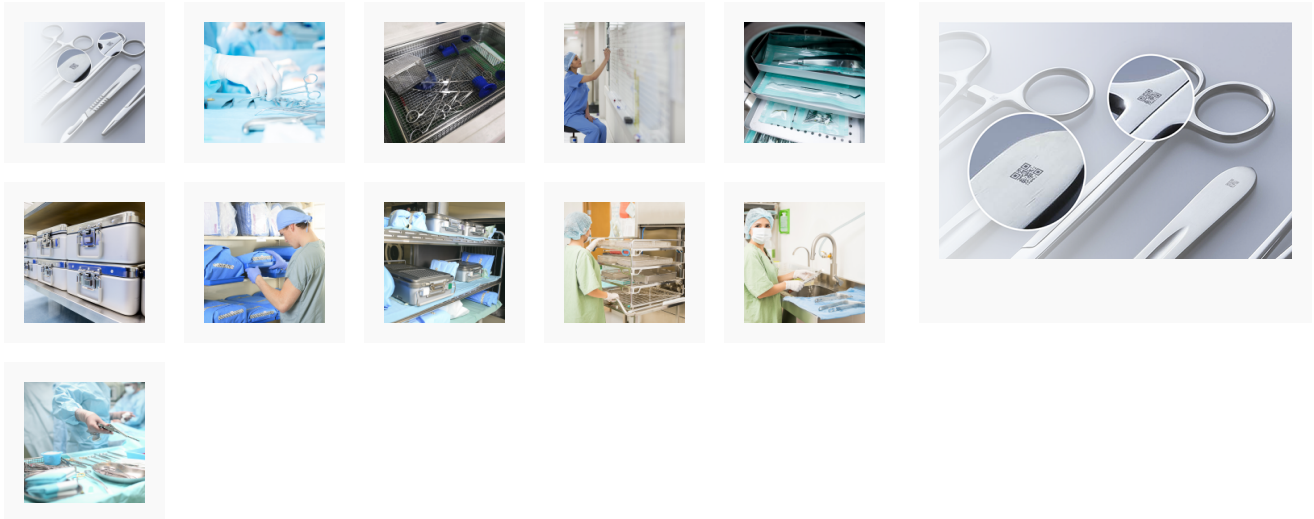


Censis CensiTrac®










CensiTrac Instrument and Tray Tracking & Management System by Censis



Features

- CensiTrac is a comprehensive asset management solution.
- CensiTrac provides transparency to all CSD & Theatre stakeholders on instrument reprocessing and workflow.
- CensiTrac helps to drive faster turnaround times to meet busy theatre schedules.
- CensiTrac offers easy access to department records and data through analytical software and helps to support evolving regulatory requirements.
- CensiTrac efficiently manages the increasing number of complex staff competencies and supports reprocessing of larger and more complicated equipment & trays.
- CensiTrac easily integrates with other digital tools like oneSource and Belimed Smarthub, to provide your CSD with a well supported workflow.
- CensiTrac supports the whole process throughout the CSD; **DECONTAMINATION** - prioritises instrument set reprocessing via a seamless theatre scheduler interface, **TRAY ASSEMBLY** - improves accuracy and efficiency by giving users immediate on-screen access to important details, **STERILISATION** - provides seamless electronic data capture, encouraging a paperless environment that maintains compliant records, **CASE CART ASSEMBLY** - eliminates time wasted searching for assets through unique inventory management capabilities and **OPERATING ROOM** - enhances theatre efficiency, start times and theatre staff visibility to case/tray status.

Product Code	Product Description	Pack Size	Quote
CEN-CLOUD SER90518	Censis Instrument Tracking, Cloud based virtual server	ea	
CEN-INSTRAC SER90529	CensiTrac Instrumentrac Licence Subscription	ea	
CEN-INSTT-FAC SER90532	CensiTrac Instrument Level Tracking - Facility License	ea	

Product Code	Product Description	Pack Size	Quote
CEN-INSTT1-4, SER90504, SER90505, SER90506, SER90507	CensiTrac Instrument Level Tracking - Tier 1	ea	
CEN-TRAYT1-4, SER90521, SER90530, SER90522, SER90530, SER90517	CensiTrac Tray Level Tracking - Tier 1 to Tier 4 Sites	ea	
CEN-WASHINT, SER90528	Equipment Interface - Washers	ea	
CEN-STERINT, SER90527	Equipment Interface - Sterilisers	ea	
CEN-MOBIT1-4, SER90510, SER90511, SER90512, SER90513	MobileTrac to Tier 1 -Tier 4 Sites	ea	
CEN-ORT1-4, SER90514, SER90515, SER90533, SER90516	OR Integration to Tier 1 to Tier 4 Sites	ea	
CEN-DENTT1-2, SER90531, SER90503	CensiTrac Dental Tracking - Tier 1- to Tier 2	ea	
CEN-LLINKALL, SER90508	LoanerLink to existing CensiTrac site (all tiers)	ea	
CEN-LLINKSA, SER90509	LoanerLink Stand-Alone	ea	

Relevant Product

- [Belimed Smarthub](#)
- [Censis ScopeTrac](#)
- [Soluscope EP Digital](#)
- [WD290IQ Washer Disinfecter](#)
- [WD290 Washer Disinfecter](#)
- [WD200 Washer Disinfecter](#)
- [WD390 Index Washer](#)
- [WD750 Cart Washer](#)
- [CS750 Clean Station](#)
- [MST-V Steam Steriliser](#)
- [MST-H Steam Steriliser](#)
- [DC2200 iX Drying Cabinet](#)
- [UW565 Ultrasonic](#)
- [WD7015 Washer Disinfecter](#)
- [WD7010 Washer Disinfecter](#)
- [WD6010 Washer Disinfecter](#)

Applications

- CSD

- Healthcare Facilities
- Endoscopy

Resources

- Video
- eBook
- Brochure